

As you enter St Francis House, the spacious four-storey staircase linking the ground to attic floors is illuminated by the impressive window above. From the Lower Ground Floor to the beamed attic you will find each floor appointed to the highest standards. St Francis House will match your needs for flexible office space.



St Francis House

BUSINESS CENTRE

QUALITY OFFICES

Close to the Norwich city centre, St Francis House is a substantial listed building dating from the 1800's that has been refurbished to a high standard. Situated on the main inner ring road, St Francis House affords convenient access to all major roads, Norwich's international airport, and railway station. Every feature of St Francis House has been carefully considered to provide quality, flexible offices.

CAR PARKING AND TRANSPORT

- Parking spaces in front of building
- Large Public Car Park directly opposite
- Regular public transport service from bus station 2 minutes away in Queens Road, to park & ride and local area.
- Located on inner ring road, ideal for access to airport & railway
- Short walk from city centre

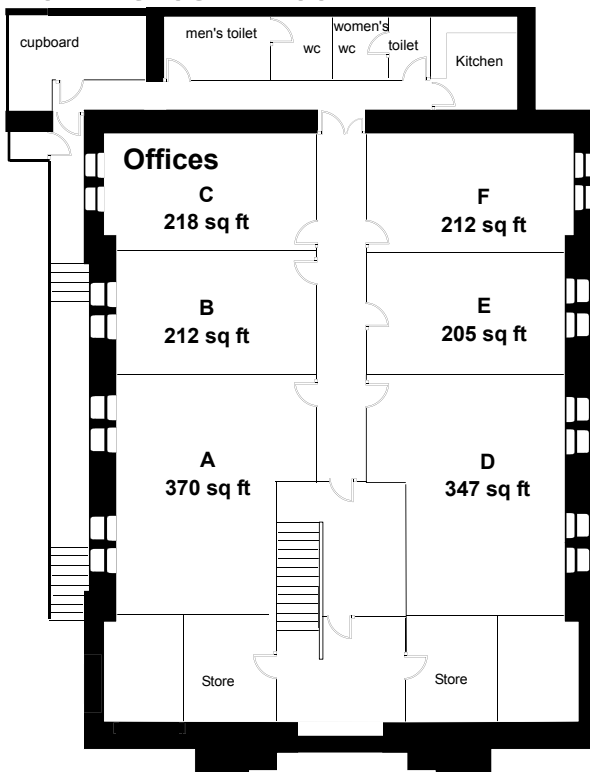
FEATURES

- Centrally Heated
- Communal space maintained to high Standards
- Kitchens for tenant's use
- Dividing walls between adjacent offices may be removed if required

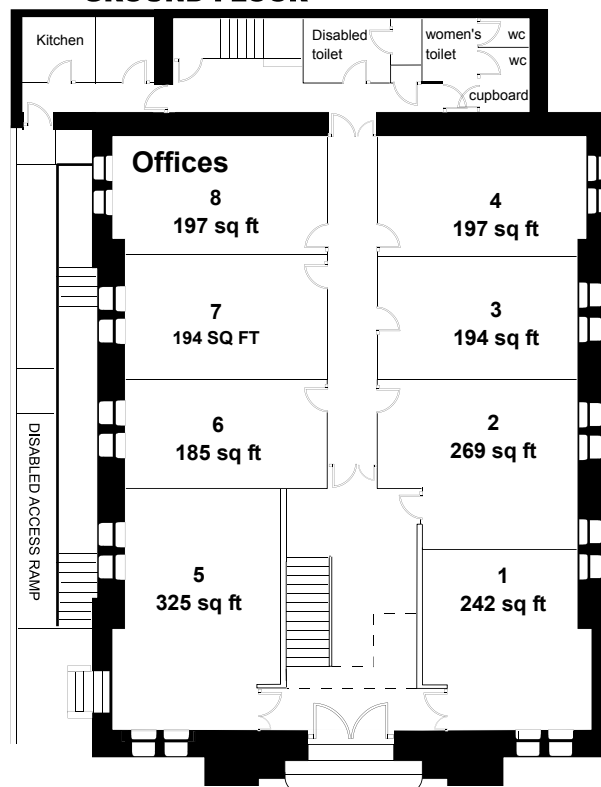


St Francis House BUSINESS CENTRE

LOWER GROUND FLOOR



GROUND FLOOR

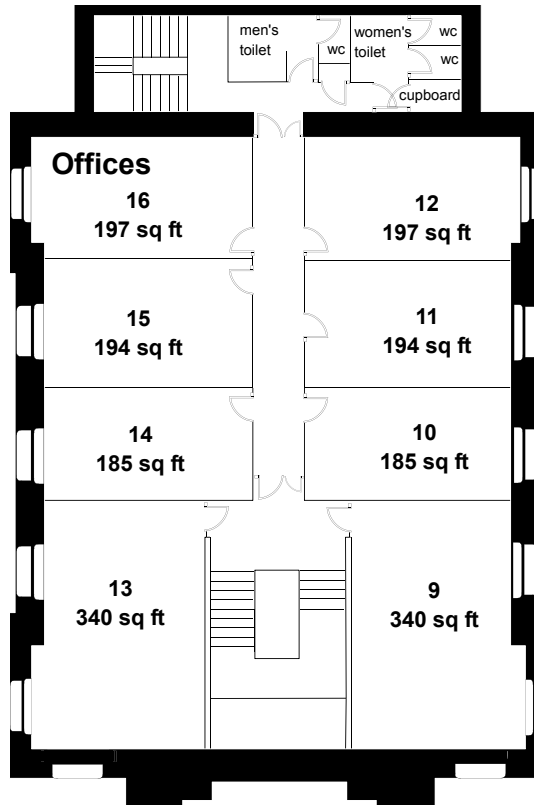


Please note : These Drawings are not to scale, but show the office number and size in square feet.

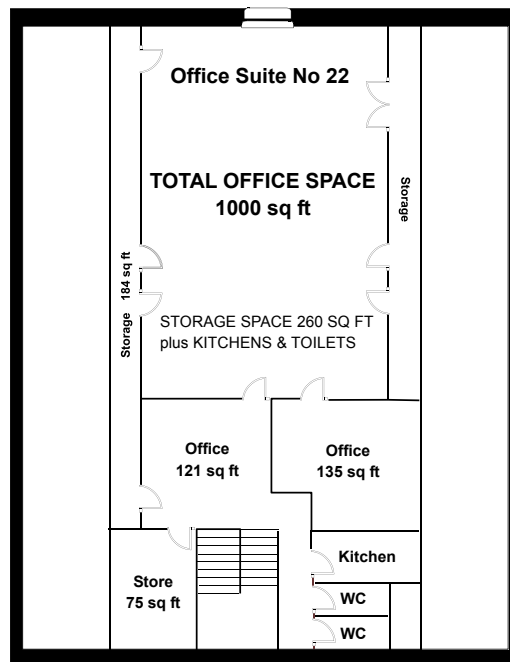
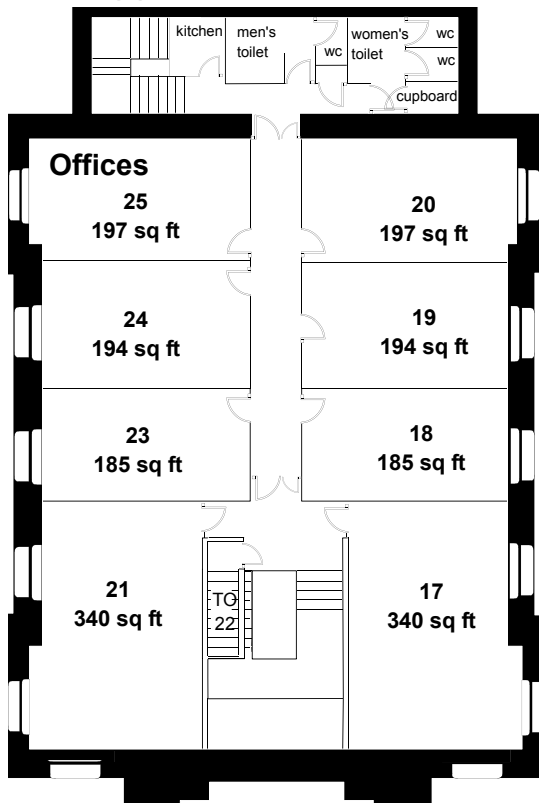


St Francis House BUSINESS CENTRE

1ST FLOOR



2ND FLOOR



Please note : These Drawings are not to scale, but show the office number and size in square feet.

